



FEATURES

- ▼ Shallow or deep box units housing incandescent or compact fluorescent lamps.
- ▼ Choice of corrosion resistant housings in die-formed brass or copper-free marine grade aluminum.
- ▼ Lamp options in 1 x 60w or 2 x 40w, 2 x 60w incandescent or 1 x 13w, 2 x 13w, 2 x 18w or 2 x 26w compact fluorescent. Shallow type versions will operate incandescent lamps only.
- ▼ Supplied with prismatic polycarbonate lens.
- ▼ 5 year warranty.

APPROVALS

- ▼ UL 1598A - Marine Inside Drip Proof Type
- ▼ ABS
- ▼ Conforms to IP 62

APPLICATIONS

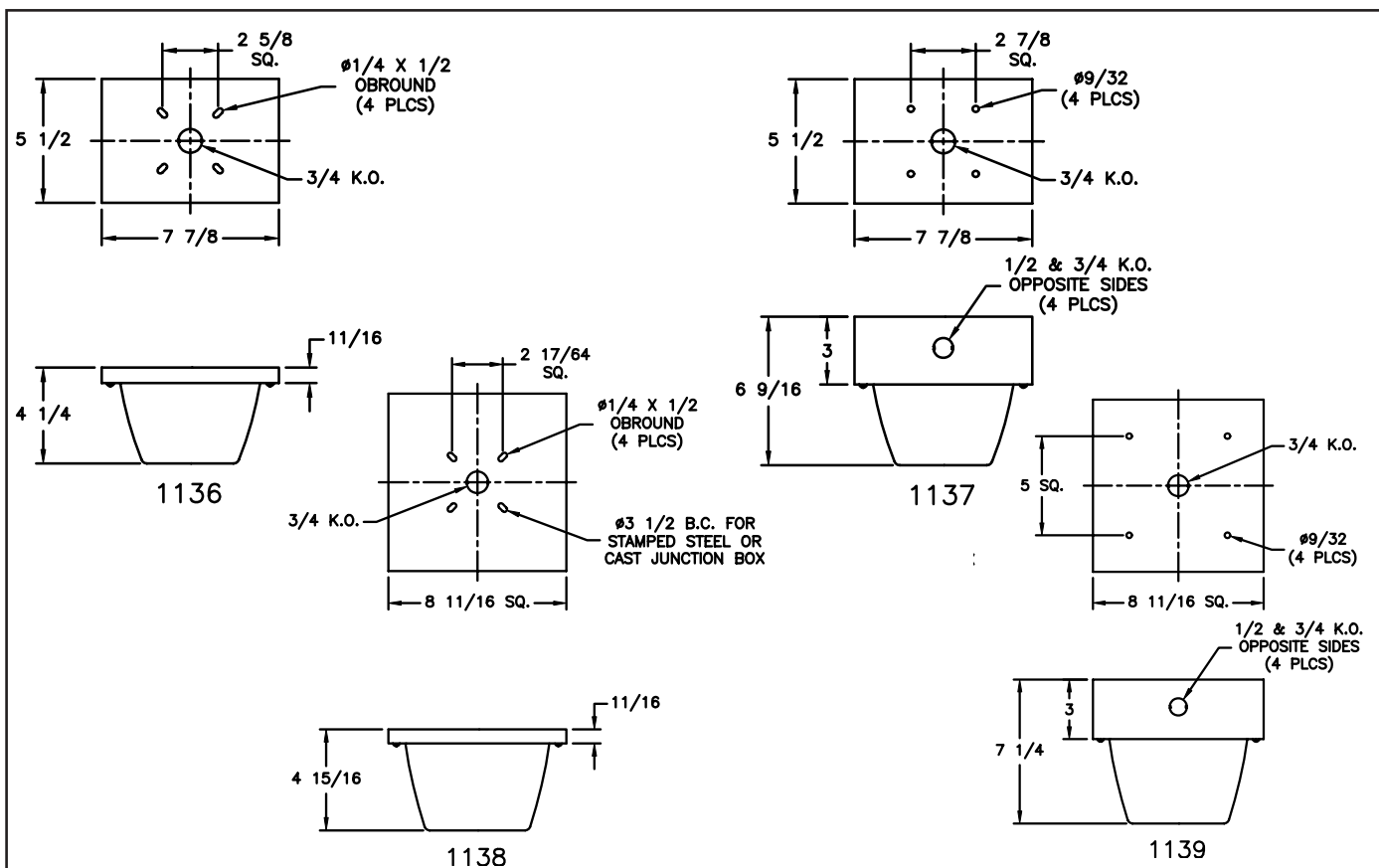
- ▼ Marine environments
- ▼ Offshore oil and gas platforms
- ▼ Drill ships and exploration vessels
- ▼ Tankers and cargo ships
- ▼ Cabin lighting
- ▼ Corridor lighting
- ▼ Amenity/recreation facility lighting

OPTIONS

To obtain a fixture with any of the options listed below, please add the following suffix to the part number:

- ▼ 277v 60Hz (compact fluorescent only) -276

DIMENSIONS



DAMP/WET LOCATIONS, INSIDE DRIP PROOF INCANDESCENT AND COMPACT FLUORESCENT CEILING FIXTURES



TECHNICAL SPECIFICATION

HOUSING

Available in die-formed brass or copper-free marine-grade aluminum with an electrostatic powder coated protective finish in dark bronze for brass fixtures or black wrinkle effect for aluminum fixtures.

KNOCKOUTS

The 1136 and 1138 shallow type unit has one 3/4" knock out. The 1137 deep box fixture has three 1/2" knock outs one at each end and one on the back while the 1139 version has five knockouts, one 1/2" knock out at opposite ends, one 3/4" knockout at opposite ends and one 3/4" knock out on the back of the unit.

GASKETS

One piece silicone gasket provides an effective seal between the lens and housing.

LENS

A prismatic clear polycarbonate lens is provided as standard.

VOLTAGE OPERATION

Fluorescent fixtures are supplied to operate on 120v AC 60Hz as standard. Incandescent fixtures are rated up to 250v AC.

LAMP TYPE

1136 shallow type fixtures will operate 1 x 60w incandescent lamps only. 1137 deep box units will operate 1 x 60w incandescent lamps or 1 x 13w or 1 x 18w compact fluorescent lamps. 1138 shallow type fixtures will operate 2 x 40w incandescent lamps only. 1139 deep box type units will operate 2 x 60w incandescent lamps and 2 x 13w, 18 or 26w compact fluorescent lamps. Compact fluorescent fixtures are supplied with lamps; incandescent fixtures are supplied without lamps.

LAMPHOLDER

A porcelain lampholder is supplied as standard on incandescent fixtures. Polycarbonate lampholders are supplied on compact fluorescent.

ORDERING REFERENCES

INCANDESCENT FIXTURES

DESCRIPTION	LAMP SIZE	ALUMINUM WEIGHT (lbs)	BRASS TYPE (B)	ALUMINUM TYPE (A)
Shallow Box Type	1 x 60w	2.0	1136B	1136A
	2 x 40w	2.5	1138B	1138A
Deep Box Type	1 x 60w	2.5	1137B	1137A
	2 x 60w	3.0	1139B	1139A

COMPACT FLUORESCENT FIXTURES

Compact fluorescent fixtures are available in 13w, 18w and 26w versions. 1137 units will operate 1 x 13w or 18w lamps only and 1139 units will operate 2 x 13w, 18w or 26w lamps. To order compact fluorescent fixtures choose the part number of the similar style incandescent fixture, prefix the number with the letter "F" and select one of the following suffix that denotes your preferred lamp size.

13w - 13 • 18w - 18 • 26w - 26

Worked Example: F1139B-18 is a brass deep box drip proof ceiling fixture with 2 x 18w compact fluorescent lamps.

SPARE PARTS

LAMPS

40w Incandescent	INX3531
60w Incandescent	INX3526
13w Compact fluorescent	FX3530
18w Compact fluorescent	FX3524
26w Compact fluorescent	FX3526

LAMP HOLDERS

Incandescent	INX4088
Compact fluorescent 13w	FX4047
Compact fluorescent 18w	FX4030
Compact fluorescent 26w	FX4034

LENS

Clear Prismatic (1 lamp)	INX2164
Clear Prismatic (2 lamp)	INX2165

LENS GASKET

1 Lamp	GKT5079
2 Lamps	GKT5081

BALLAST - 120VAC 60Hz

1 x 13w	FX5087
1 x 18w	FX5206
1 x 26w	FX5206

