



FEATURES

- ▼ Portable cargo hold or pit lights in 400 or 500w versions.
- ▼ Rugged corrosion resistant housings in heavy gauge spun copper-free marine-grade aluminum.
- ▼ Plated steel protective wire guard prevents damage to lamps and allows flexible positioning of light either up right or tilted.
- ▼ 1770 fixtures are supplied with shock and vibration resistant lampholders.
- ▼ 5 year warranty.

APPROVALS

- ▼ *UL 1598A - Marine Inside Type
- ▼ ABS
- ▼ Conforms to IP 22

* 1770 models only.

APPLICATIONS

- ▼ Marine environments
- ▼ Transportation/exploration vessels
- ▼ Drill ships and exploration vessels
- ▼ Ferries
- ▼ Tankers
- ▼ Cargo hold lighting
- ▼ Pit lighting

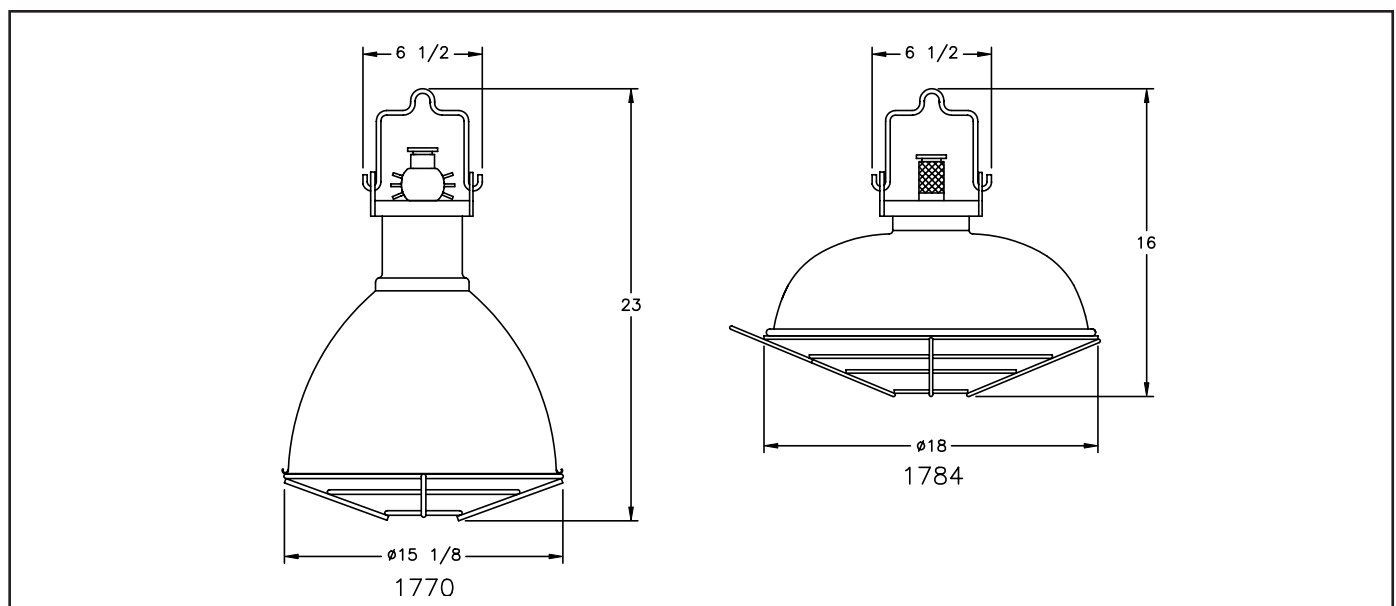
OPTIONS

To obtain a fixture with any of the options listed below, please add the following suffix to the part number (not all options can be combined):

- | | |
|---------------------|------|
| ▼ 25 feet of Cable | 25* |
| ▼ 50 feet of Cable | 50* |
| ▼ 75 feet of Cable | 75* |
| ▼ 100 feet of Cable | 100* |

*For 1770 MA Units only

DIMENSIONS



Dimensions in inches



DAMP/WET LOCATIONS, INSIDE DRIP PROOF MARINE PIT OR CARGO HOLD LIGHT FIXTURES

TECHNICAL SPECIFICATION

HOUSINGS

Heavy gauge spun copper-free marine-grade aluminum with a natural finish. Covers and rod looped handles are steel with an oven-cured polyester powder coated silver protective finish. The 1770MA unit has a cast aluminum splice box.

GUARD

Steel wire guard (cadmium plated) aids in protecting the lamp(s) from foreign objects.

OUTLETS

1770 units are supplied with 16-3 type SO UL approved cord. Cord lengths are optional and can be supplied in 25, 50, 75 or 100 ft lengths. Please specify by including the appropriate code from the options list in the part number when ordering. For other cord sizes and plugs please contact Pauluhn direct. All 1784 units are supplied without cable and plugs.

VOLTAGE OPERATION

Rated for use up to 250v AC 60Hz supply.

LAMP TYPE

All fixtures are supplied without lamps. 1770 units use 500w PS-40 incandescent lamps while the 1784 unit uses four 100w A-19 medium base incandescent lamps.

LAMPHOLDER

The 1770 units have a shock and vibration resistant mogul base porcelain lampholder provided while 1784SA units have a medium base lampholder provided as standard.

REFLECTOR

Spun aluminum with natural finish.

HARDWARE

Stainless steel.

ORDERING REFERENCES

INCANDESCENT BERTH/MIRROR FIXTURES

DESCRIPTION	LAMP SIZE	WEIGHT (lbs)	TYPE
Cargo Hold Unit With Cable	500w PS-40	5.0	1770MA25 1770MA50 1770MA75 1770MA100
Cargo Hold Unit Without Cable	500w PS-40	5.0	1770SA
Cargo Hold Unit Without Cable	4 x 100w Medium Base A-19	5.0	1784SA*
Note: *Not UL listed			

SPARE PARTS

LAMP HOLDERS	
Shock proof porcelain For 1770 Unit	INX4030
Medium base for 1784 Unit	INX4032
GUARDS	
1770 Type	INX1001
1784 Type	INX1002

