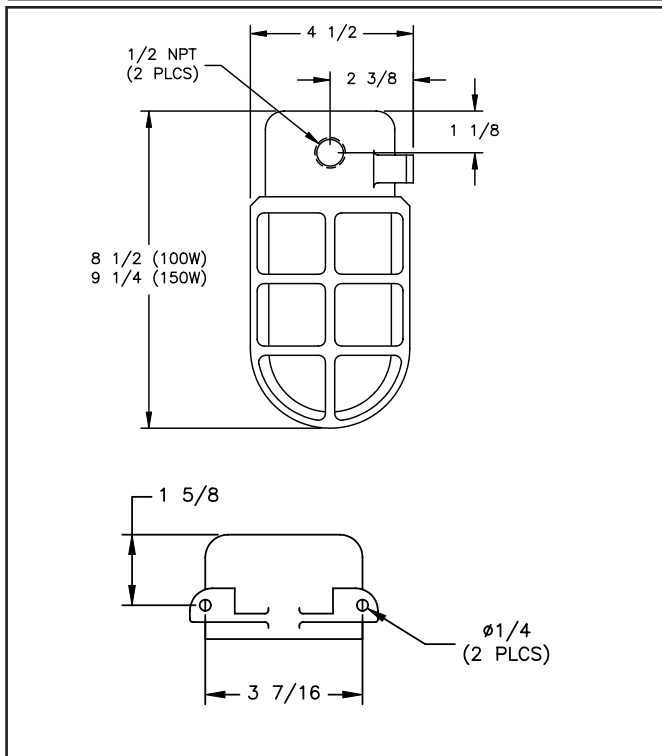




## FEATURES

- ▼ Wall bracket fixture with a choice of 100w or 150w incandescent lamps.
- ▼ Choice of corrosion resistant housings in rugged natural heavy wall cast brass or natural copper-free marine-grade cast aluminum.
- ▼ Supplied with a high-impact natural heavy web cast brass or natural copper-free marine-grade cast aluminum protective guard (except where polycarbonate globes are requested).
- ▼ Supplied with clear glass globe as standard with a choice of colored lens in yellow, green, red, blue or frosted.
- ▼ 5 year warranty.

## DIMENSIONS



## APPROVALS

- ▼ UL 1598A - Marine Outside Type Saltwater
- ▼ ABS
- ▼ Conforms to IP 66

## APPLICATIONS

- ▼ Marine and wet environments
- ▼ Offshore oil and gas platforms
- ▼ Drill ships and exploration vessels
- ▼ Tankers
- ▼ Deck Lighting
- ▼ Gantry and walkway lighting

## OPTIONS

To obtain a fixture with any of the options listed below, please add the following suffix to the part number (not all options can be combined):

- |  |     |
|--|-----|
| ▼ Porcelain Lampholder                     | P   |
| ▼ Shockproof Lampholder                    | SP  |
| ▼ Double Pole Toggle Switch                | K   |
| ▼ Frosted Globe                            | FST |
| ▼ Polycarbonate Globe (guard not provided) | PG* |
| ▼ Heat Resistant Clear Glass Globe         | HR  |
| ▼ Red Globe                                | RED |
| ▼ Blue Globe                               | BLU |
| ▼ Green Globe                              | GRN |
| ▼ Yellow Globe                             | YEL |

\* 100w incandescent only.

# MARINE, OUTSIDE AND CORROSIVE ENVIRONMENTS VAPOR AND WATERTIGHT INCANDESCENT WALL MOUNT FIXTURE



## TECHNICAL SPECIFICATION

### HOUSING

Available in heavy wall cast brass with a natural finish or cast aluminum with a natural finish.

### GUARD

High impact protective guard in natural cast brass or natural copper-free marine-grade cast aluminum supplied with fixture as standard except where polycarbonate globes are requested.

### OUTLETS

All units are supplied drilled and tapped with two 1/2" NPT outlet as standard. Other drilling and tapping options up to a maximum of 3/4" NPT available.

### GASKETS

One piece silicone gasket provides an effective seal between the lens and housing.

### HARDWARE

Stainless steel.

### LAMPHOLDER

A phenolic lampholder with a nickel plated copper screw shell is supplied as standard.

### OPERATING VOLTAGE

All fixtures are rated up to 300v AC.

### LAMP TYPE

The fixture is suitable for lamps of 100w or 150w incandescent. Fixtures are supplied with out lamps.

### GLOBE

A clear glass globe is provided as standard in 6" for 100w fixtures and 7" for 150w. Colored globes are available in red, blue, green and yellow.

### SWITCH

A double toggle pole switch and a watertight boot is available as an option.

## ORDERING REFERENCES

INCANDESCENT FIXTURES				
DESCRIPTION SIZE	LAMP	BRASS WT (lbs)	BRASS TYPE (B)	ALUMINUM TYPE (A)
Incandescent	100w max A-19	5.0	733B	733A
Incandescent	150w max A-21	5.0	733B7	733A7

SPARE PARTS		
<b>LAMP HOLDERS</b>		
Phenolic	INX4000	
Porcelain	INX4000P	
Shockproof	INX4000SP	
<b>GUARDS</b>		
6" 100w Fixtures	Brass	INX1036B
	Aluminum	INX1036A
7" 150w Fixtures	Brass	INX1037B
	Aluminum	INX1037A
<b>GLASS GLOBES</b>		
<b>6" 100w FIXTURES</b>		
Clear	INX2006CLR	
Green	INX2006GRN	
Blue	INX2006BLU	
Red	INX2006RED	
Yellow	INX2006YEL	
Frosted	INX2006FST	
Clear HR	INX2006HR	
<b>7" 150w Fixtures</b>		
Clear	INX2007CLR	
Green	INX2007GRN	
Blue	INX2007BLU	
Red	INX2007RED	
Yellow	INX2007YEL	
Frosted	INX2007FST	
Clear HR	INX2007HR	
<b>LAMP</b>	100w A-19	INX3528
	150w A-21	INX3543
<b>GLOBE GASKET</b>	GKT2002SIL	
<b>DOUBLE POLE TOGGLE SWITCH</b>	INX3012	
<b>WATERTIGHT SWITCH BOOT</b>	GKT8000	

