



FEATURES

- ▼ Single or double face EXIT fixtures.
- ▼ Corrosion resistant housing and diffuser frame in copper-free marine-grade aluminum with an oven-cured polyester powder coated white high gloss protective finish.
- ▼ Choice of 1 x 8w fluorescent or 1 x 25w incandescent lamp options.
- ▼ Emergency versions available.
- ▼ Available with red or green lettering.
- ▼ 5 year warranty.

APPROVALS

- ▼ ABS
- ▼ Conforms to IP 20

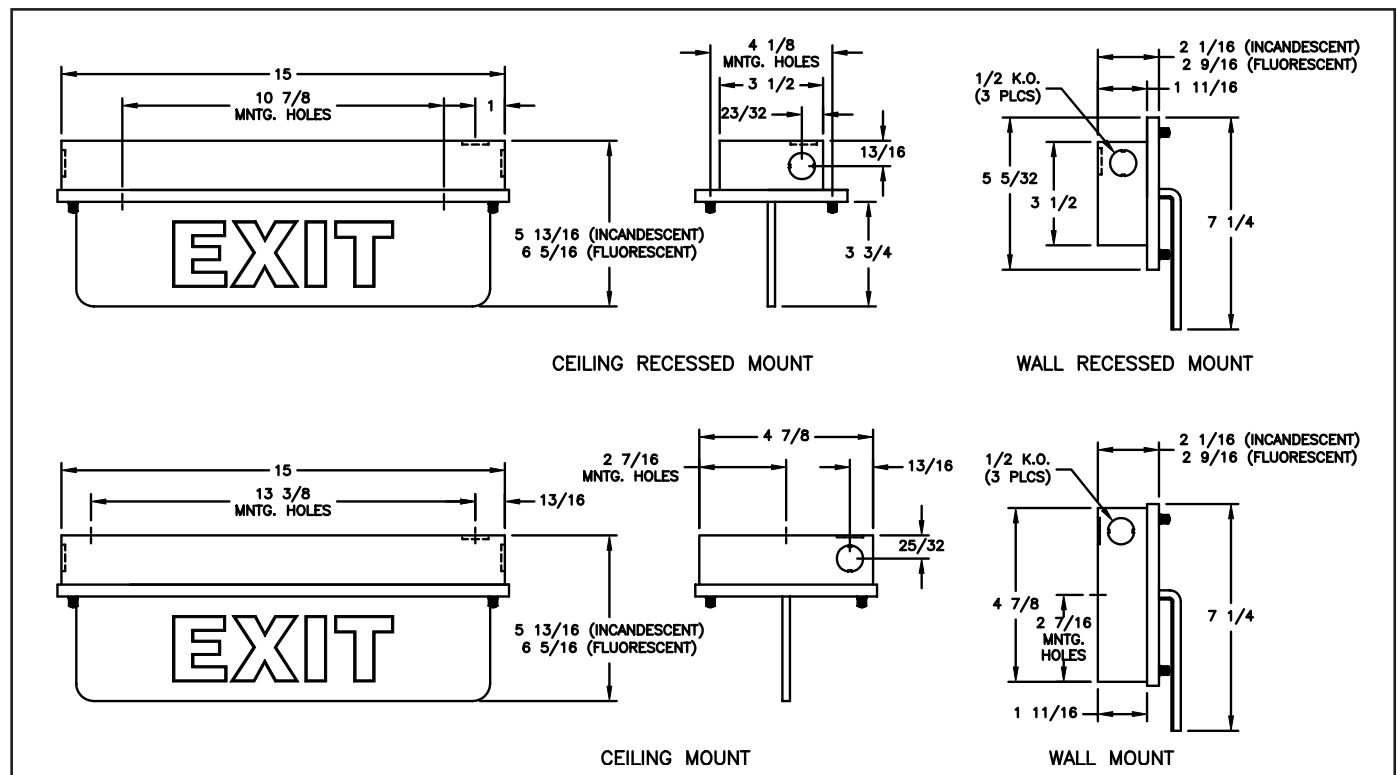
APPLICATIONS

- ▼ Marine and wet environments
- ▼ Offshore oil and gas platforms
- ▼ Drill ships and exploration vessels
- ▼ Tankers and cargo ships
- ▼ Ferries
- ▼ Commercial vessels

OPTIONS

See ORDER REFERENCE.

DIMENSIONS



Dimensions in inches



INSIDE TYPE INCANDESCENT AND FLUORESCENT EXIT SIGNS

TECHNICAL SPECIFICATION

CONSTRUCTION

The housing and diffuser frame are corrosion resistant aluminum with a polyester powder coated finish.

OUTLETS

All units are supplied with a single knockout at each end.

MOUNTING

Wide range of flexible mounting arrangements in wall, ceiling, recessed wall and recessed ceiling.

BALLAST

The fluorescent type is supplied with a 120v AC 60Hz LPF ballast. Other options include 220v AC 50Hz, 220v AC 60Hz and 277v AC 60Hz.

LAMP TYPE

All fixtures are supplied with lamps. The incandescent version has one 25w T6 lamp provided while the fluorescent type has one 8w T5 lamp included.

DIFFUSER

Polished acrylic diffuser panel with precision engraved "EXIT" letters. This is combined with the choice of background, faces and arrow directions chosen from the ordering reference.

ORDERING REFERENCES

INCANDESCENT AND FLUORESCENT EXIT SIGN FIXTURES

WORKED ORDERING EXAMPLE	1.	2.	3.	4.	5.	6.	7.	8.
8w Fluorescent single face aluminum ceiling mounted exit sign with 120v 60Hz emergency ballast and a red right arrow and lettering on a white background	F	1	A	C	RW	AR	EM	

1. LAMP TYPE I Incandescent (25w) F Fluorescent (8w)	3. MATERIAL A Aluminum	5. LETTERS/BACKGROUND RW Red on White GW Green on White	7. BALLAST EM Emergency* *For fluorescent only.
2. NUMBER OF FACES 1 Single Face 2 Double Face	4. MOUNTING W Wall C Ceiling WF Wall Recessed CF Ceiling Recessed	6. ARROW DIRECTION Blank No Arrow "EXIT" only AR Right Arrow AL Left Arrow DA Dual Arrow AURS Arrow Up Right Side AULS Arrow Up Left Side DAU Dual Arrow Up EXER Emergency Exit	8. INPUT VOLTAGE Blank 120v AC 60Hz 226 200v AC 60Hz 225 220v AC 60Hz 277 277v AC 60Hz

SPARE PARTS

BALLASTS				LAMP HOLDERS	
Emergency	FX5019	220v 50Hz	FX5081	Incandescent	INX4101
120v 60Hz	FX5012	277v 60Hz	FX5090	Fluorescent	FX4029
220v 60Hz	FX5168				