



FEATURES

- Surface mounted junction boxes.
- Choice of corrosion resistant enclosures in heavy wall cast brass or copper-free marine-grade cast aluminum.
- Gasketed covers maintain watertight integrity.
- Stainless steel hardware provides long term accessibility to box interiors through corrosion resistance.
- 5 year warranty.

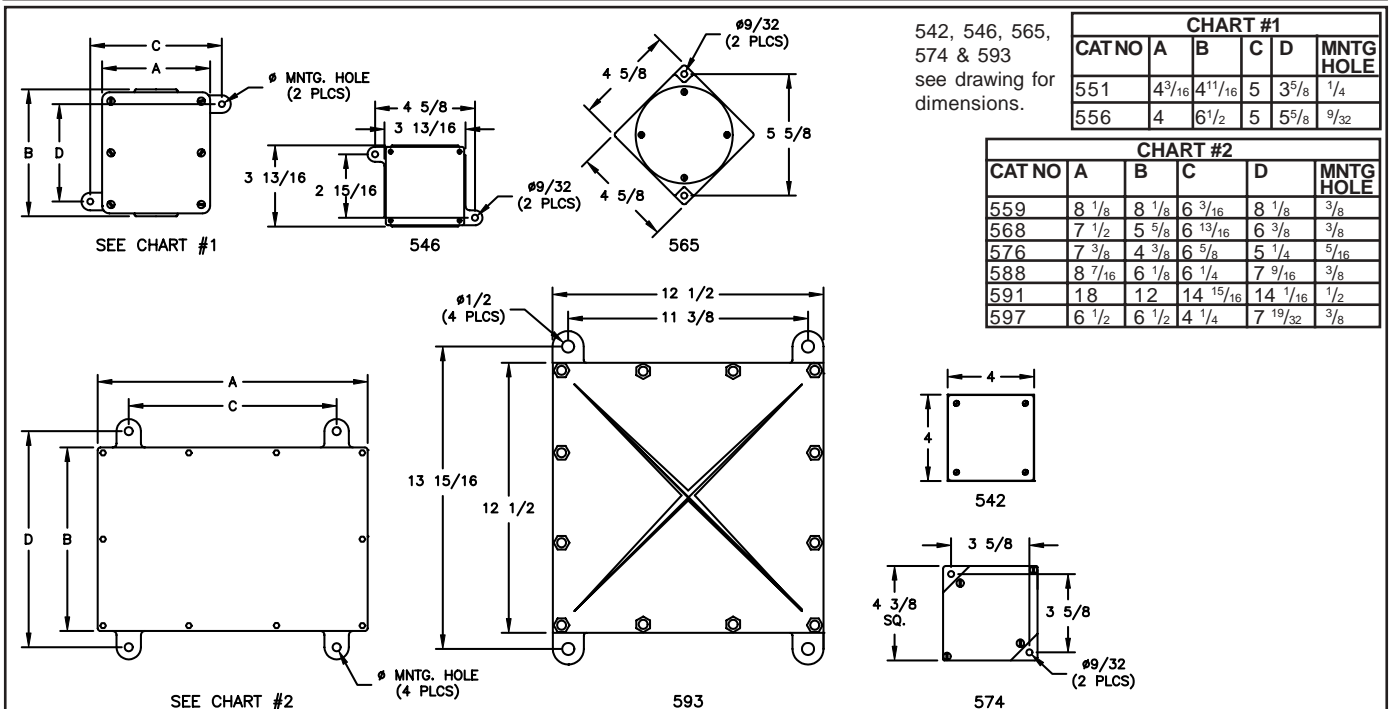
APPROVALS

- ABS
- Type 4X
- Conforms to IP 66

APPLICATIONS

- Marine and wet environments
- Offshore oil and gas platforms
- Drill ships and exploration vessels
- Tankers
- Ferries/Passenger Ships

DIMENSIONS





MARINE, OUTSIDE AND CORROSIVE ENVIRONMENTS WATERTIGHT JUNCTION BOXES

TECHNICAL SPECIFICATION

HOUSING

Heavy wall cast brass or copper-free marine-grade aluminum with a natural finish.

MOUNTING

All units are surface mounted via two or four external mounting holes dependent on type.

OUTLETS

All units are furnished blank as standard. Drilling and tapings can be supplied if required. Please state requirement on application

HARDWARE

Stainless steel for all types.

ORDERING REFERENCES

MARINE WATERTIGHT JUNCTION BOXES

DESCRIPTION	DIMENSIONS	BRASS WT (lbs)	BRASS TYPE (B)	ALUMINUM TYPE (A)
Junction Box	4" x 4" x 1 1/2"	2.8	542B	542A
Junction Box	4" x 4" x 2"	3.5	546B	546A
Junction Box	4 5/8" x 4 1/4" x 2 1/4"	4.3	551B	551A
Junction Box	6" x 3 1/2" x 2"	5.5	556B	556A
Junction Box*	8" x 8" x 6"	20.0	559B	559A
Junction Box	4 1/2" SQ x 2 1/4" Deep	4.3	565B	565A
Junction Box*	7" x 5" x 3"	12.5	568B	568A
Junction Box	4 3/8" x 4 3/8" x 2 3/16"	4.3	574B	574A
Junction Box*	7" x 4 1/2" x 3"	8.3	576B	576A
Junction Box*	8" x 6" x 4"	17.3	588B	588A
Junction Box*	18" x 12" x 6"	80.0	591B	591A
Junction Box*	12" x 12" x 6"	50.0	593B	593A
Junction Box*	6" x 6" x 4"	15.0	597B	597A

SPARE PARTS

BRASS BOX COVERS AND GASKETS		ALUMINUM BOX COVERS AND GASKETS		GASKETS ONLY	
542B	INX6798B	542A	INX6798A	542	GKT4001
546B	INX6583B	546A	INX6583A	546	GKT4001
551B	INX6800B	551A	INX6800A	551	GKT5036
556B	INX6571B	556A	INX6571A	559	GKT4007
559B	INX6809B	559A	INX6809A	556	GKT5003
565B	INX6570B	565A	INX6570A	565	GKT3000
568B	INX6802B	568A	INX6802A	568	GKT5004
574B	INX6653B	574A	INX6653A	574	GKT4002
576B	INX6803B	576A	INX6803A	576	GKT5013
588B	INX6807B	588A	INX6807A	588	GKT5015
591B	INX6808B	591A	INX6808A	591	GKT5023
593B	INX6812B	593A	INX6812A	593	GKT4006
597B	INX6573B	597A	INX6573A	597	GKT4004