

PHALCONET / RADAR TARGET ENHANCER (RTE)

This RTE has been designed for marine use, to enhance the radar return of what is otherwise a poor radar target. In adverse weather a target may disappear into the sea clutter. When fitted with the Phalconet the enhanced return dramatically increases the likelihood of detection.

The low power consumption makes this ideal for use on floating marks, remote sites, yachts and cruisers, especially where power is at a premium.

What is a Radar Target Enhancer?

The Phalconet is an ACTIVE system which receives a radar signal amplifies it and re-transmits it. This ensures a stronger return signal and a more even strength around the full 360 degree azimuth.

FEATURES

Easy installation.

Maintenance free.

Lightweight (0.5Kg).

Low power consumption (12v battery).

Active radar reflector.

Safety at sea.

Reduces risks of collision and pollution.

Saves lives.

“See in the dark”.



Pharos Marine Phalconet

APPLICATIONS:

Yachts.

Fishing vessels.

Seismic vessels.

Buoys.

Piers/jetties.

Offshore structures, such as Oil and Gas platforms and wind generators.

Emergency marking.

Pharos Marine  **Automatic Power**

AB Pharos Marine Ltd, Steyning Way, Hounslow, Middlesex, TW4 6DL, England Tel: 44-20-8538 1100, Telefax: 44-20-8577 4170

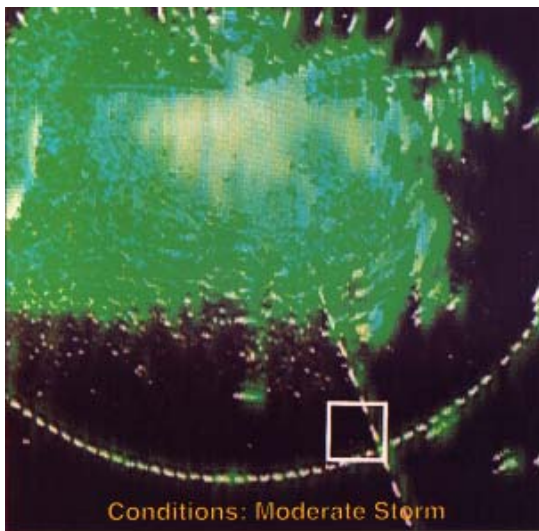
Website: www.pharosmarine.com Email: sales@pharosmarine.com

Automatic Power Inc., P.O Box 23078, Houston, Texas 77223-0738, U.S.A Tel: 1 (713) 228-5208, Telefax: 1 (713) 228-3717

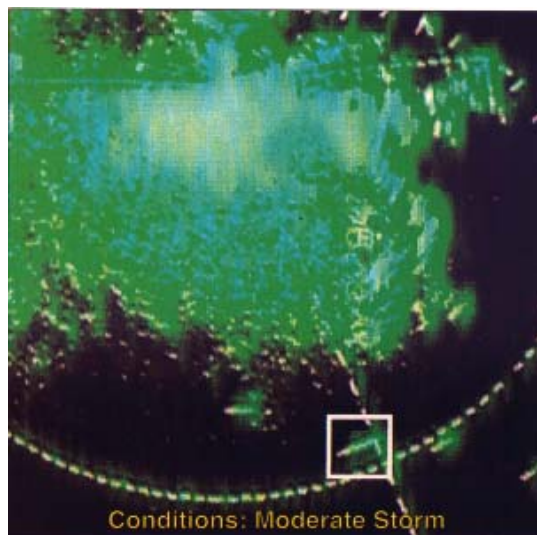
AB Pharos Marine Pte Ltd., 35 Tannery Road, #05-05, Tannery Block, Ruby Industrial Complex, Singapore 347740 Tel: (65) 6747-9325, Telex: RS 33272 PHAROS, Telefax: (65) 6746-0478



SPECIFICATIONS



Without Phalconet



With Phalconet

Operating Frequency:	X Band (9.32 – 9.5 GHz)
Maximum Gain at 9.4 GHz:	58.9dB
Minimum gain at 9.4GHz:	50dB
Polarization:	Horitontal
Antenna Vertical Beamwidth (tolerance to heel):	+/-2.4dB at +/-15deg
Response Time	1.27 nanoseconds
E.I.R.P.	Max 630mW
Power Supply:	12v DC
Current consumption in quiescent state	60mA
DIMENSION:	416MM X 50MM
WEIGHT	0.5Kg plus 1.5Kg for 5m cable with plug
* Typically an existing solar powered light will support the additional power demand.	